

Postgraduate Diploma in Cyber Risk Management

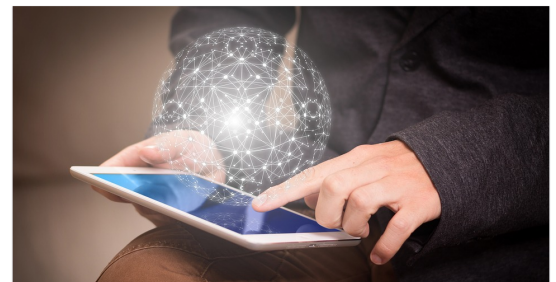


The emerging impact of Artificial Intelligence (AI) is gaining weight. Together with the benefits it delivers, there are also associated risks. The programme aims to equip students with the knowledge and skills to analyze cyber risks and put forward solutions to real-life business issues, thus helping management decision-making and strategic planning in the organisation.

Programme Structure

On completing 6 modules, students will be awarded with a Postgraduate Diploma. Duration of each module ranges from 33 to 36 contact hours. Students are expected to enrol 2 modules per semester, and be eligible to graduate in about one year. The maximum duration to complete the whole programme is 3 years.

1. Business and Professional Ethics
2. Internal Control in AI Environment
3. Cyber Risk Assessment and Resilience Strategy
4. Cyber Risk Safety and Frauds Prevention Module
5. Crisis Management in Social Media
6. Business Interruption Crisis Management



Hold a bachelor's degree awarded by a recognized institution.

If the degree or equivalent qualification is from an institution where the language of teaching and assessment is not English, applicants shall provide evidence of English proficiency.

Applicants with other qualifications will be considered on individual merit.

Programme Delivery

Each academic year is divided into 3 trimesters (October, February and May)

This provides benefits of maximum flexibility for students to enroll in different points in time and plan their pace of studies.

All Students are required to complete the whole programme in a maximum period of three years.

2 modules will be offered of each semester.

All classes will be held in weekday evenings or weekends in the HKU SPACE learning centres.

*** Mounting of each course is subject to sufficient enrolment and solely at the discretion of the School.**

Application Procedure

- Applicants are required to submit the application form with supporting documents at HKU SPACE Enrolment Centres in person or via online.
- Please present the academic documents and HKID (both original and copies for verification) for the application process.

Course Fee

Application Fee: HKD\$ 200 (Non-refundable)

Course Fee: HKD\$ 7,300 per module

- ~ Holders of the HKU Space Master Card can enjoy a 10-month interest-free instalment period for course with a tuition fee worth a minimum of HK\$2,000.
- ~ Continuing Education Fund
- ~ Non-means-tested loans Scheme from Government (Programme Code: B00600426)

Enrolment Centres

Admiralty Learning Centre [ADC]

3/F, Admiralty Centre,
18 Harcourt Road, Hong Kong
(Exit A, Admiralty MTR Station)
3761 1111

Fortress Tower Learning Centre [FTC]

14/F, Fortress Tower, 250 King's
Road., North Point, Hong Kong
(Exit B, Fortress Hill MTR Station)
3762 0888

HPSHCC Campus [HPSHCC]

1/F, HPCC Campus,
66 Leighton Road,
Causeway Bay, Hong Kong
3923 7171

Island East Campus [IEC]

2/F, 494 King's Road,
North Point, Hong Kong
(Exit B3, North Point MTR Station)
3762 0000

HKU Campus [HKUC]

3/F, T.T.Tsui Bldg.
The University of Hong Kong
Pokfulam Road, Hong Kong
2975 5680

Kowloon East Campus [KEC]

1/F, 28 Wang Hoi Road,
Kowloon Bay, Kowloon
(Exit B, Kowloon Bay MTR Station)
3762 2222

Kowloon West Campus [KWC]

38-46, Nassau Street, Mei Foo
Sun Chuen (Phase 6), Kowloon
(Exit B, Kowloon Bay MTR Station)
3762 4000